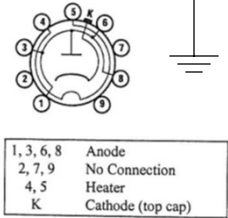
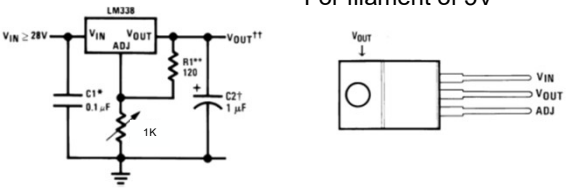


On the chokes:  
 The both choke coils are in series in the plus.  
 The black wire from contact 6 is marked with red shrink tube. (this was first the negative connections)  
 Moved the red wire from 3 to 4 and made a bridge from 3 to 6.



For filament of 5V



5V for the 300B XLS and 520B EML  
 5V+ is connected to f4 on the 300B XLS 520B EML  
 C3m need 20V DC, Can also use C3o this one needs 6.3V DC

Power supply  
 Revision date: Saturday, February 10, 2024 @ 17:12  
 520 B 300 B XLS or 300B Mesh EML siemens C3m.vsd  
 Robbert H. ter Haar  
 Page 1 of 3